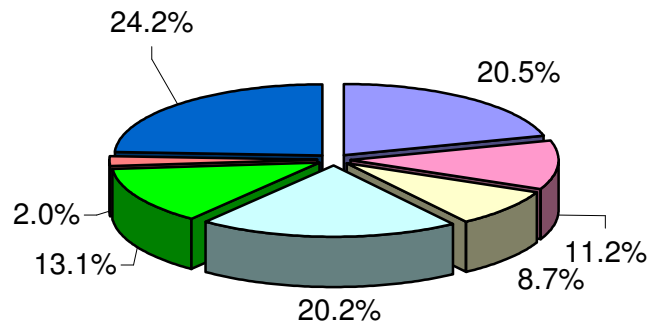


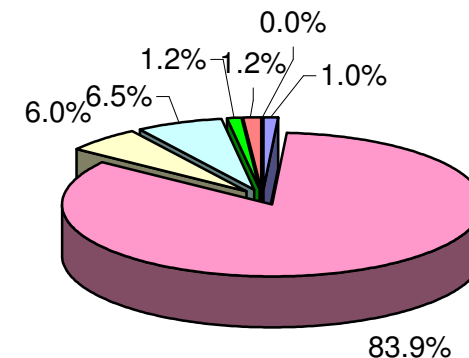
Compte	BUDGET	Budget 2010		Budget 2009		Comptes 2008	
		Charges	Recettes	Charges	Recettes	Charges	Recettes
	Administration Générale	1'332'580.00	65'700.00	1'384'850.00	67'600.00	1'370'576.58	102'342.90
	Finances	727'800.00	5'410'750.00	712'500.00	5'486'700.00	3'422'672.62	7'867'300.86
	Domaines et bâtiments	564'000.00	388'045.00	733'210.00	403'045.00	960'222.45	552'918.30
	Travaux	1'311'700.00	421'300.00	1'385'525.00	416'800.00	1'557'709.30	402'956.65
	Instruction publique et cultes	853'150.00	80'400.00	743'100.00	71'800.00	671'369.45	61'200.00
	Police	131'360.00	79'300.00	120'350.00	74'300.00	158'746.60	131'857.30
	Service social	1'574'290.00	2'400.00	1'451'405.00	2'400.00	1'715'834.65	757'141.00
	Totalisation	6'494'880.00	6'447'895.00	6'530'940.00	6'522'645.00	9'857'131.65	9'875'717.01
	Résultat		-46'985.00		-8'295.00	18'585.36	

Charges 2010



- Administration Générale
- Finances
- Domaines et bâtiments
- Travaux
- Instruction publique et cultes
- Police
- Service social

Recettes 2010



- Administration générale
- Finances
- Domaines et bâtiments
- Travaux
- Instruction publique et cultes
- Police
- Service social